

# Mechanical Lift (Ball Screw, Electric Type)

## HFH Standard

Load capacity: 441 lb



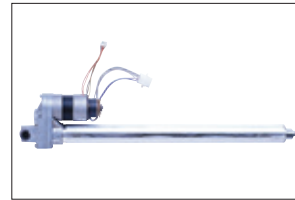
HFH-P200-15

**Battery powered high-performance achieved at a low cost!**

This is one equipment necessary for transporting small articles.

Major features of the HFH Mechanical Lift Series

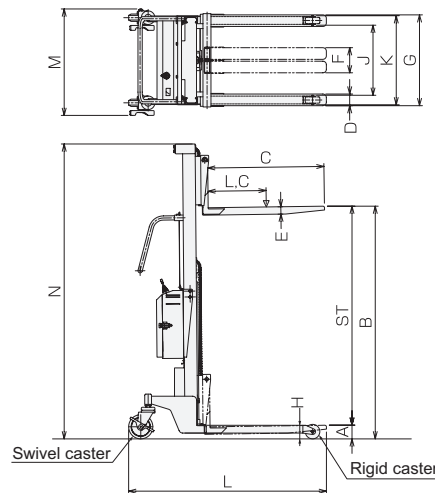
- Uses IPM motor
- Clean operation without oil leaks due to the dry cylinder
- Does not fall by itself
- Maintenance free
- Battery-powered type that is very simple to operate
- With vector control for smooth operation



Cylinder



Inside unit box



■ Electric types comparison table

	Speed	Cost
Hydraulic type HFH-DXXX	○	△
Ball screw type HFH-BXXX	△	○

Unit: inch

	Model	Load capacity	Load center distance (LC)	Fork height				Fork dimensions				Leg dimensions			Wheel dimensions		External dimensions			Lifting duration loaded/unloaded (in seconds)	Battery	Motor DC 12 V kW	Deadweight
				Minimum height A	Minimum height *A	Maximum height B	Stroke (ST)	Length C	Width D	Thickness E	Slide outside width F to G	Height H	Internal width J	External width K	Rigid caster	Swivel casters with brakes	Total length L	Total width M	Total height N				
Standard	HFH-P200-9	441lb	11.8	2.8	3.2	35.4	32.6	23.6	2.4	1.5	5.1 to 18.4	3	14.2	18.1	3	4.9	40.3	21.6	48.1	9/21	30A19L	0.7	168lb
	HFH-P200-12					47.2	44.4												59.9	13/29			174lb
	HFH-P200-15					59.1	56.3												71.7	16/37			181lb

When the fork is placed on the legs the minimum height will be increased by about 11 mm.